

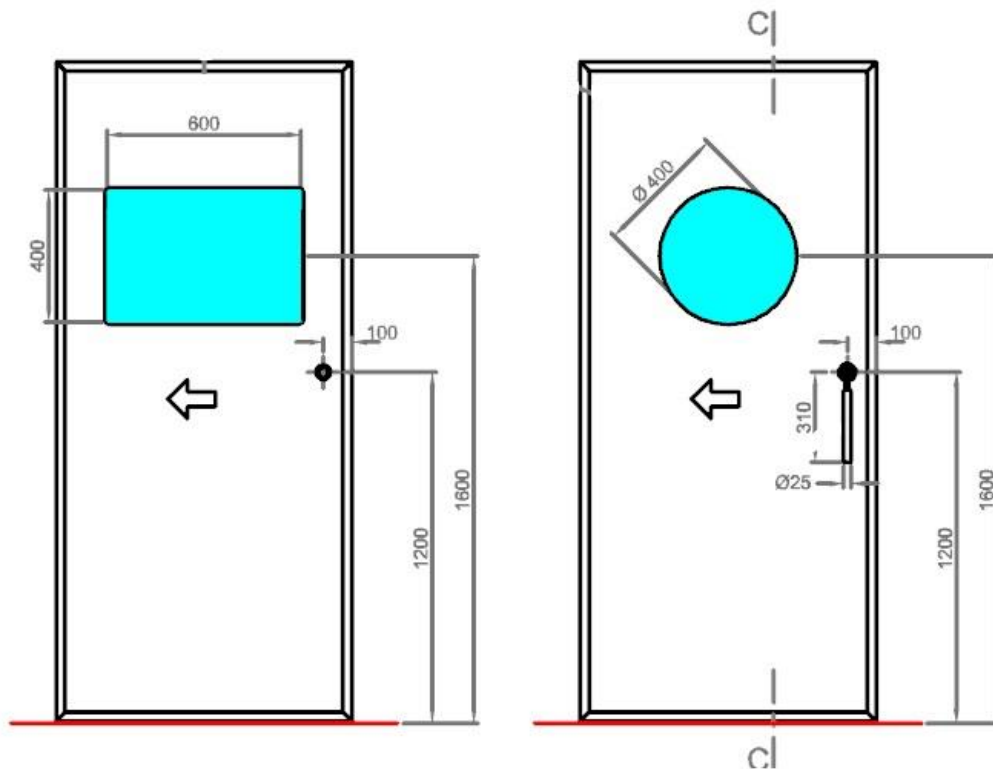
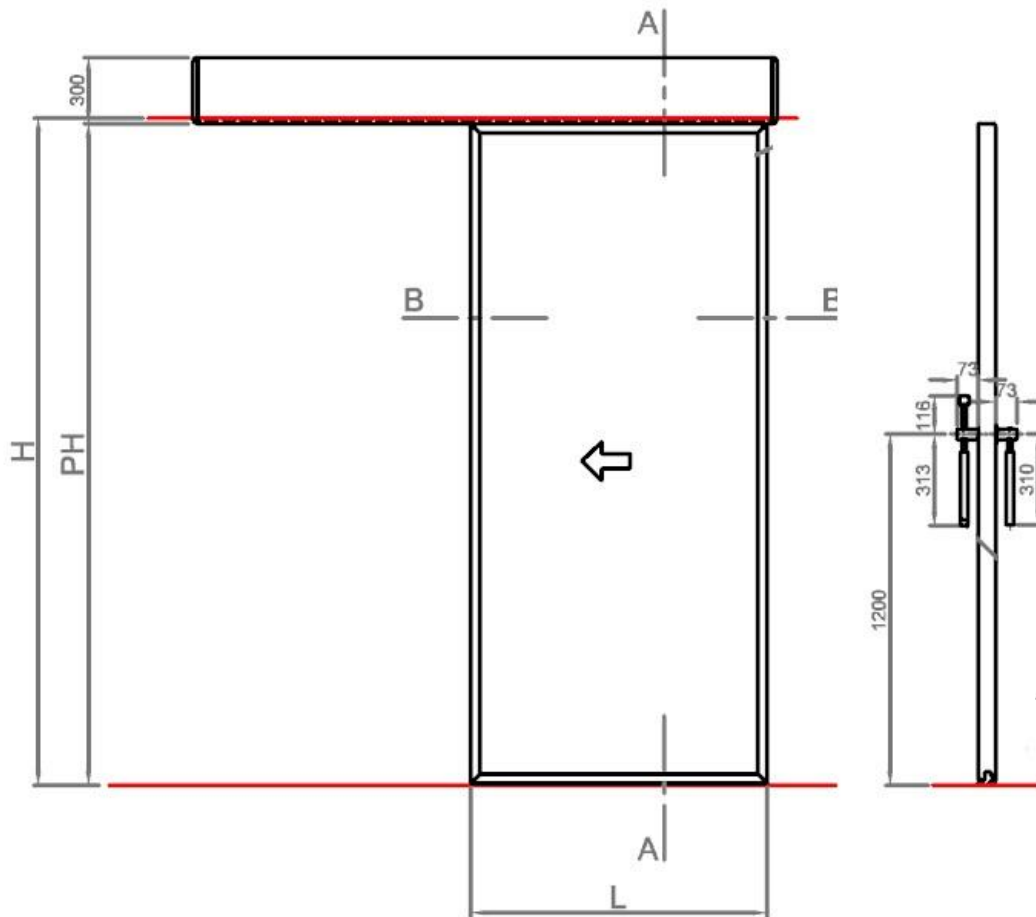
BRAVURA

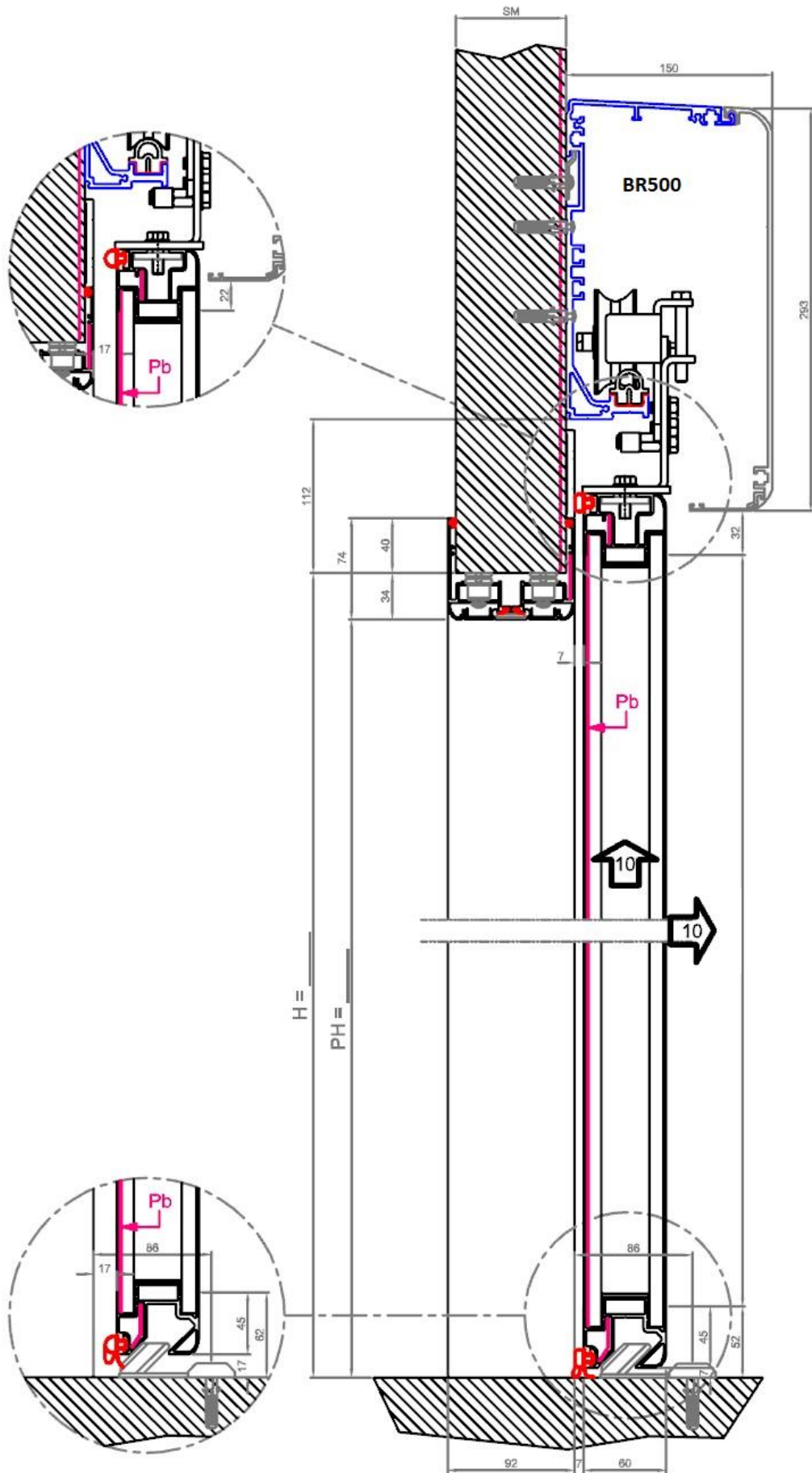
Maakt automatisch uw deur!

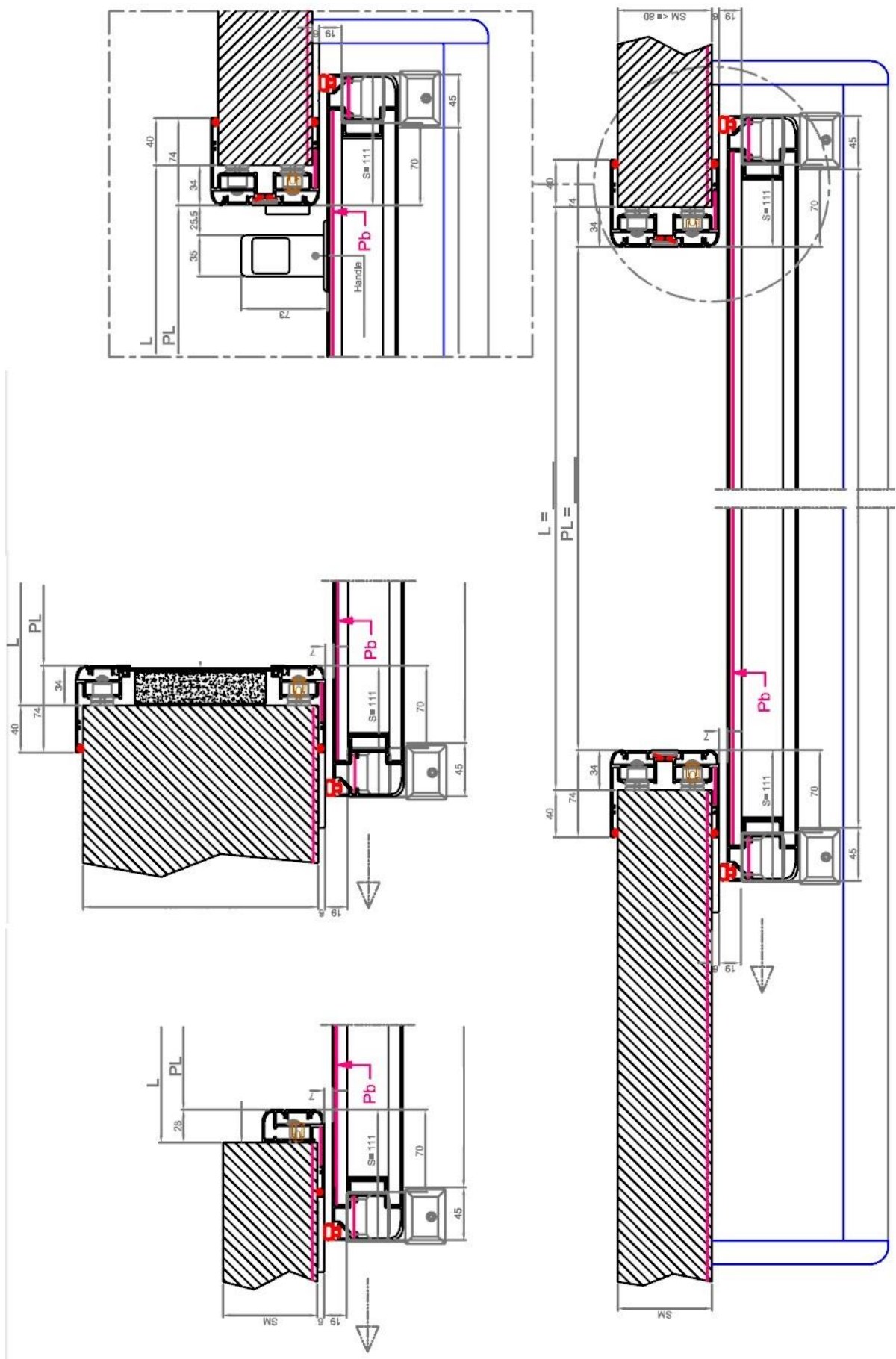


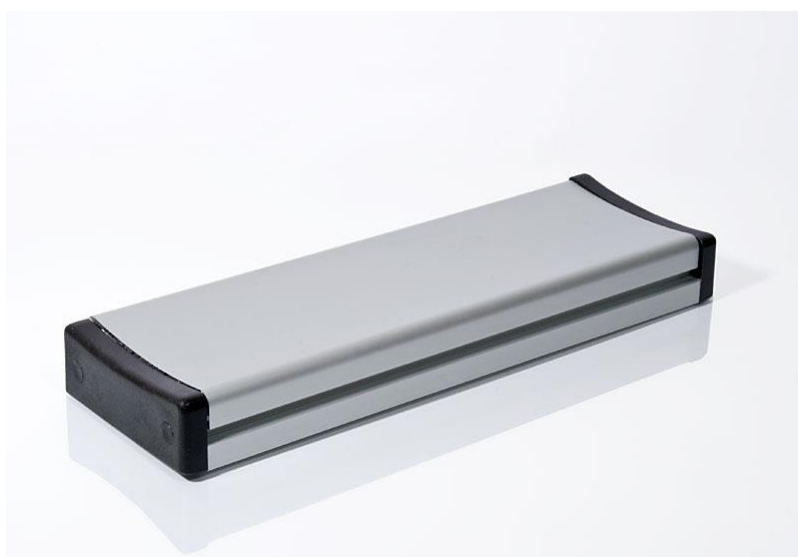












Sound insulation power, R , according to ISO 10140-2

Description of the test element:

Aluminium Frame with panelled wing in AISI 304 Stainless Steel Sheet, with screening in Lead sheet thickness 3 mm

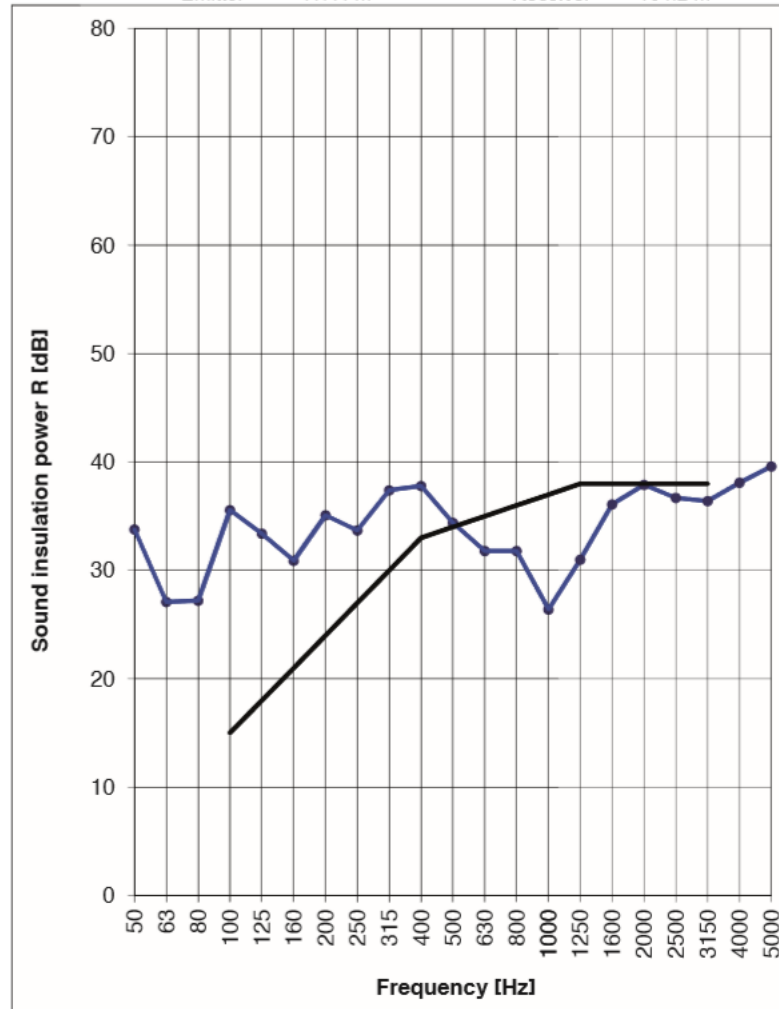
Area of the test element:

 3.5 m²

Volume of the spaces:

 Emitter 117.4 m³ Receiver 164.2 m³

f	R
[Hz]	[dB]
50	33.8
63	27.1
80	27.2
100	35.6
125	33.4
160	30.9
200	35.1
250	33.7
315	37.4
400	37.8
500	34.4
630	31.8
800	31.8
1000	26.4
1250	31.0
1600	36.1
2000	37.9
2500	36.7
3150	36.4
4000	38.1
5000	39.6



Measurement in conformity with ISO 717-1

 $R_w(C;C_{tr}) = 34 (-2; -3) \text{ dB}$ $C_{50-3150} = -2 \text{ dB}$; $C_{50-5000} = -1 \text{ dB}$; $C_{100-5000} = -1 \text{ dB}$

Assessment based on results of measurements in the laboratory obtained using a technical method.

 $C_{tr,50-3150} = -3 \text{ dB}$; $C_{tr,50-5000} = -3 \text{ dB}$; $C_{tr,100-5000} = -3 \text{ dB}$

Laboratory Manager Mr Antonio Scofano