

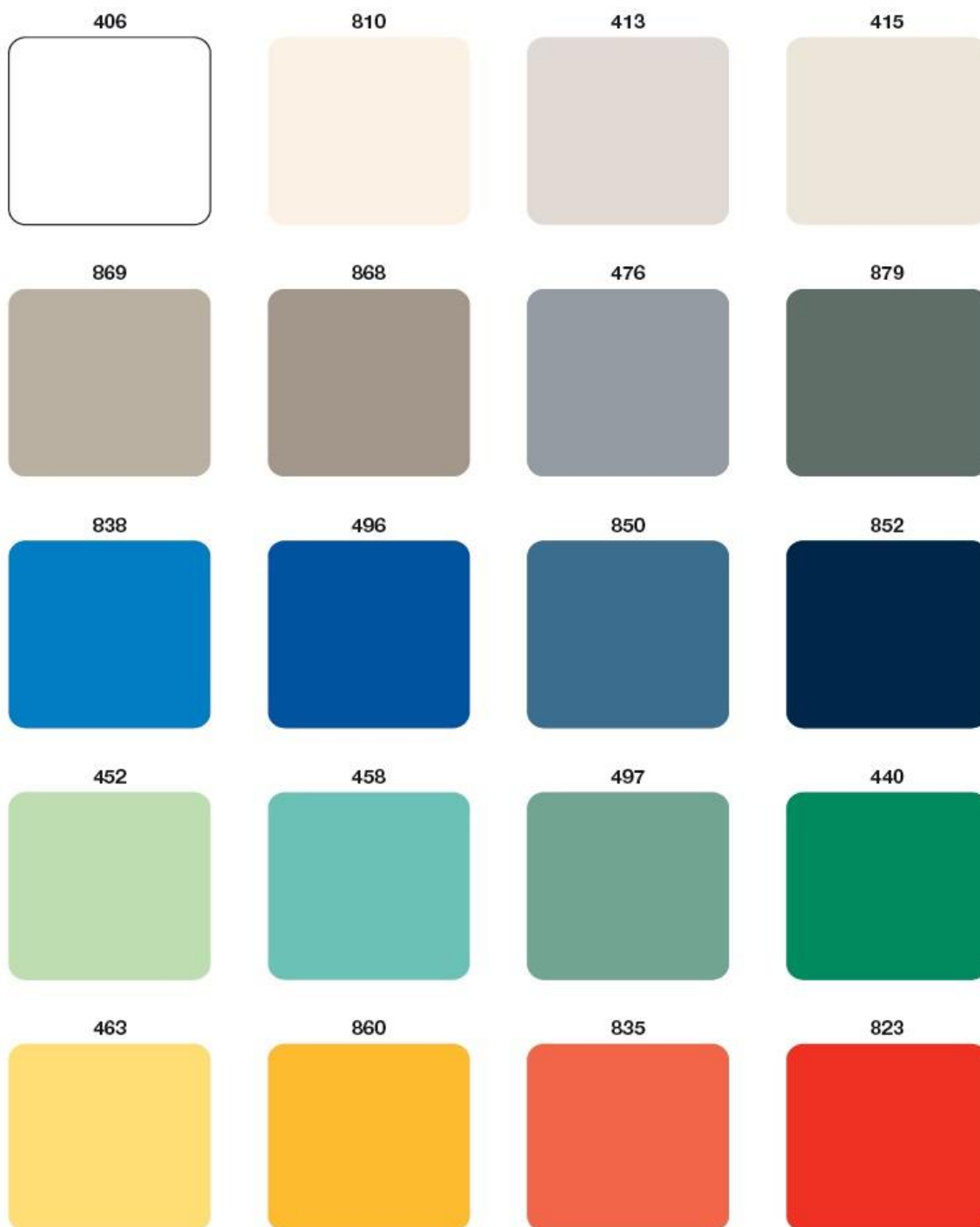
BRAVURA

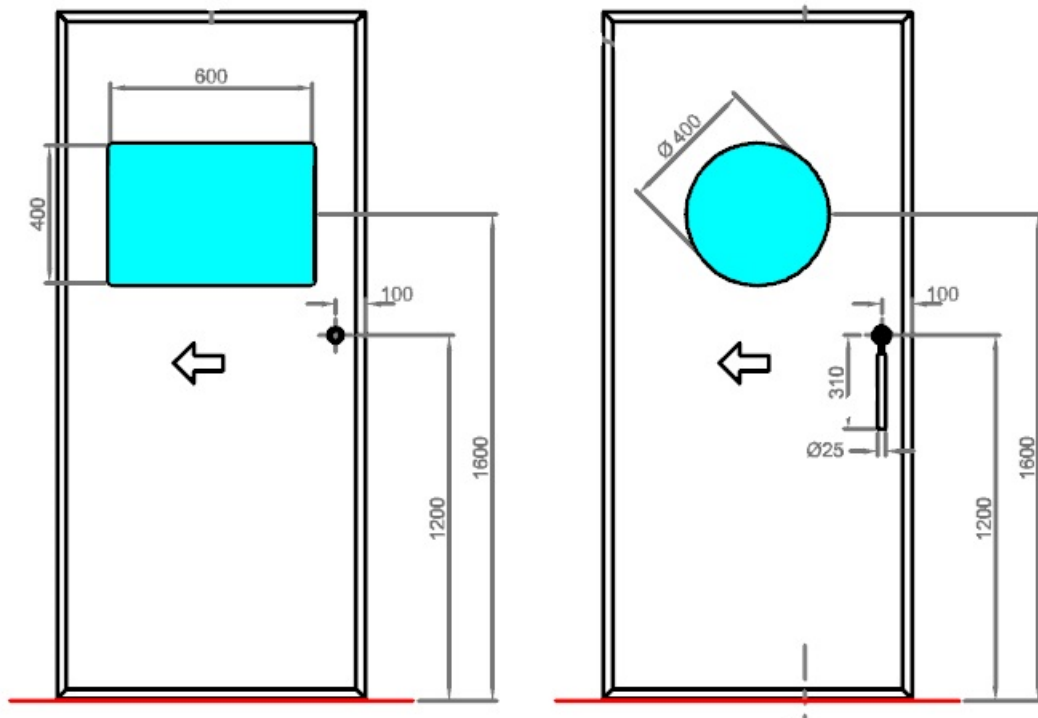
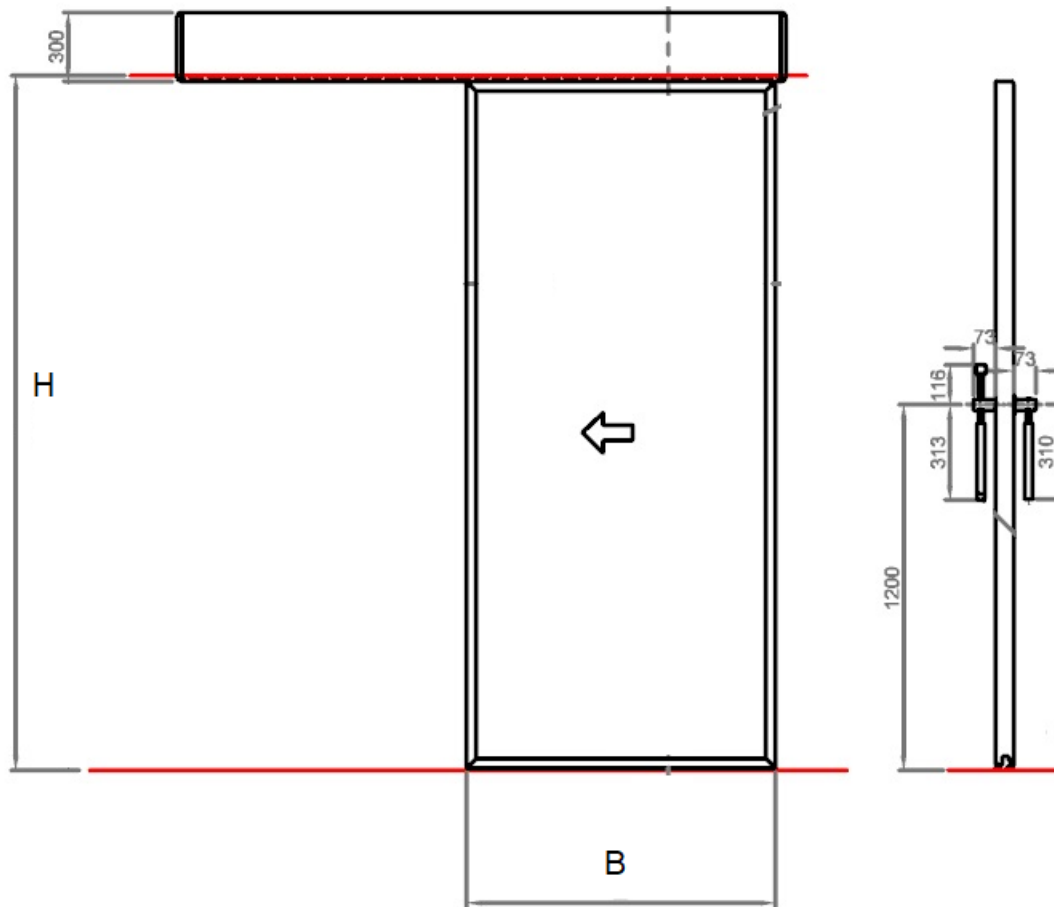
Maakt automatisch uw deur!

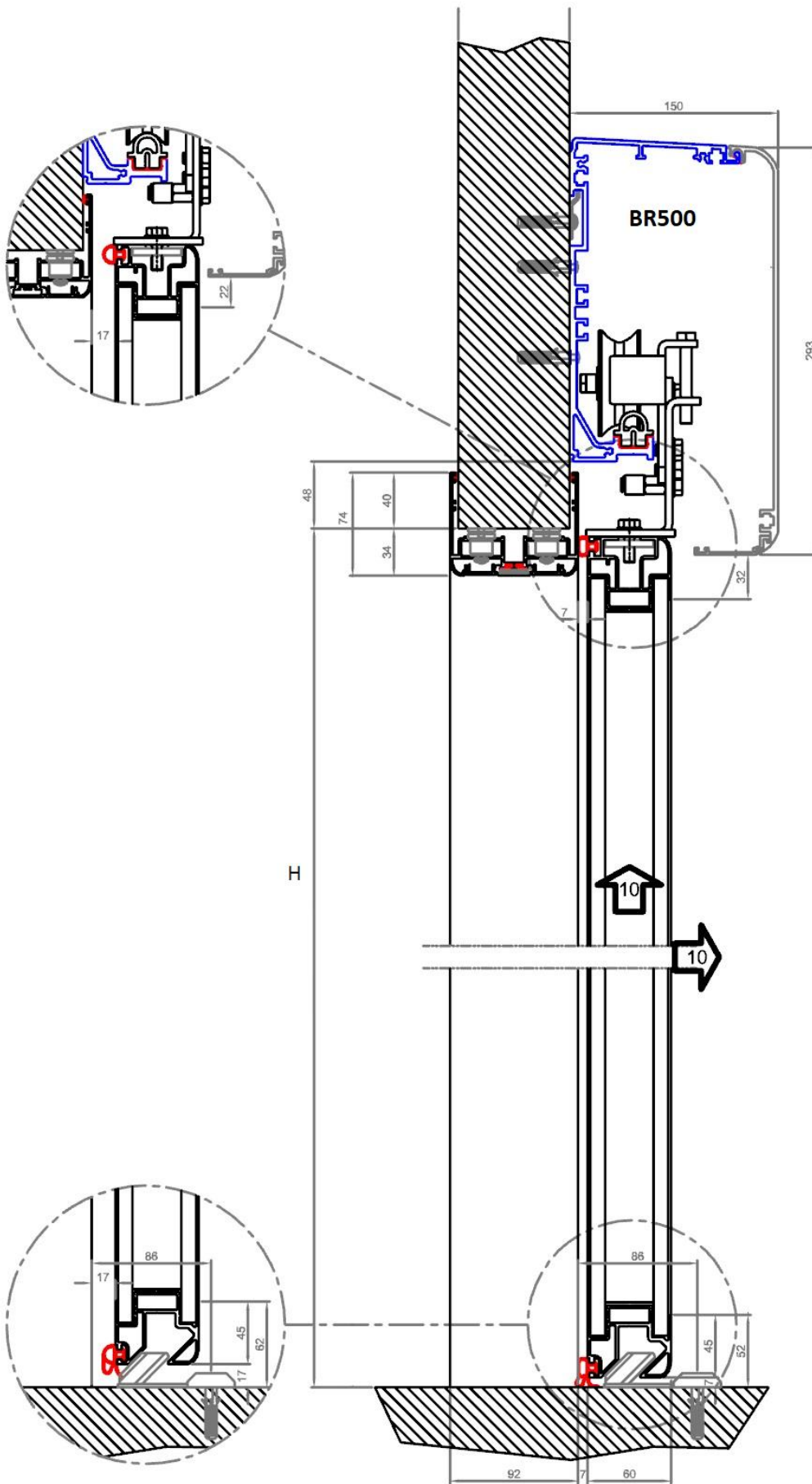


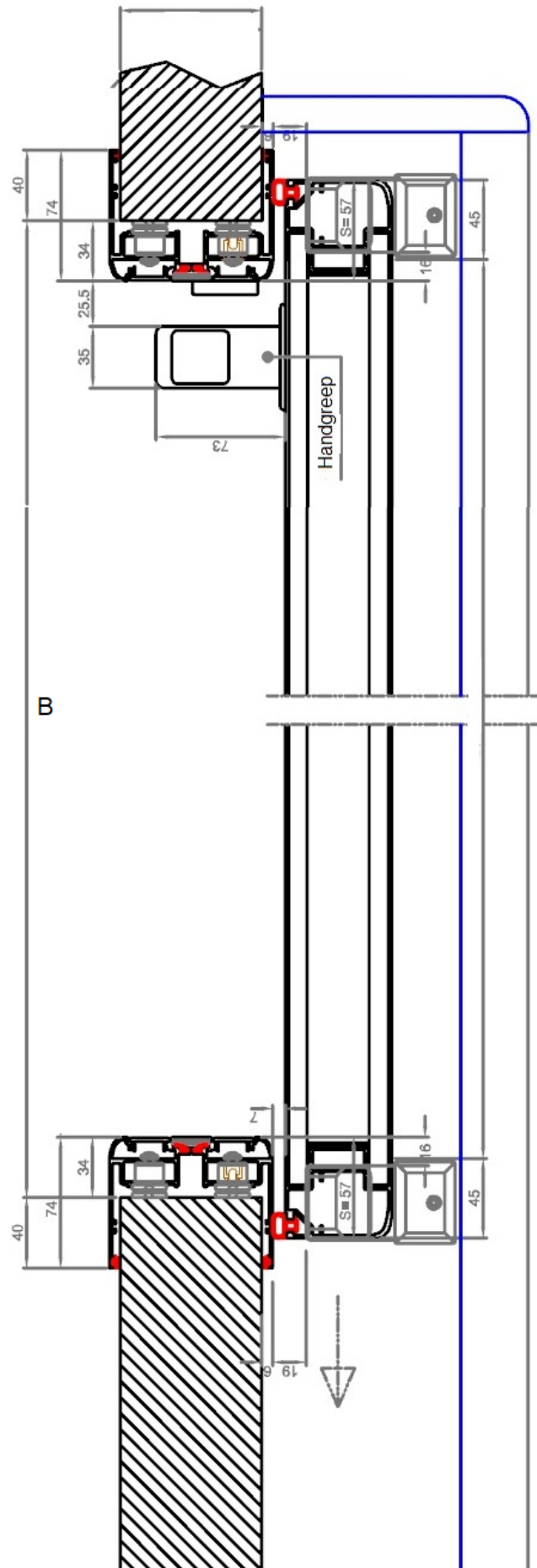


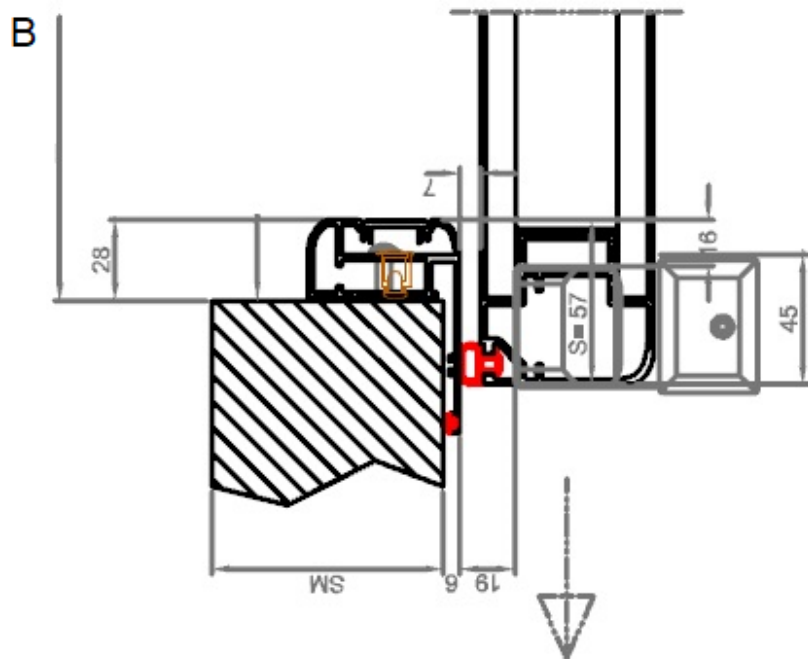
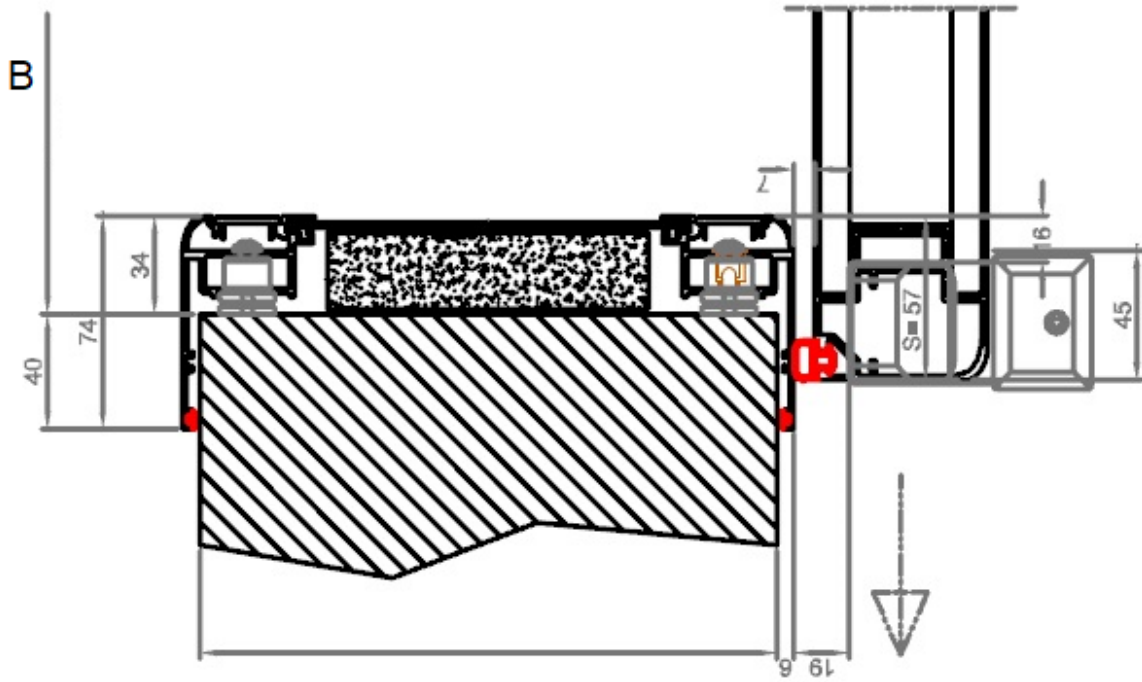












Sound insulation power, *R*, according to ISO 10140-2

Description of the test element:

Aluminium Frame with panelled wing in HPL Sheet

Area of the test element:

3.5 m²

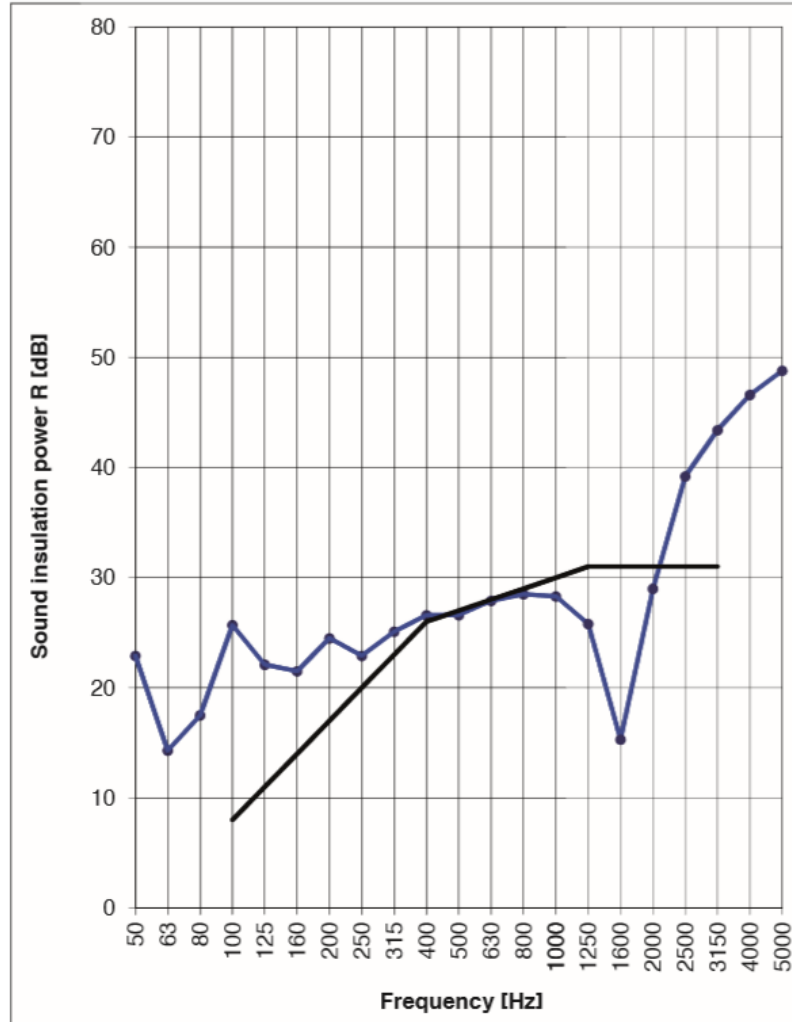
Volume of the spaces:

Emitter 117.4 m³

Receiver

164.2 m³

f	R
[Hz]	[dB]
50	22.9
63	14.3
80	17.5
100	25.7
125	22.1
160	21.5
200	24.5
250	22.9
315	25.1
400	26.6
500	26.6
630	27.9
800	28.5
1000	28.3
1250	25.8
1600	15.3
2000	29.0
2500	39.2
3150	43.4
4000	46.6
5000	48.8



Measurement in conformity with ISO 717-1

$R_w (C; C_{tr}) = 27 (-4; -4)$ dB $C_{50-3150} = -4$ dB; $C_{50-5000} = -3$ dB; $C_{100-5000} = -3$ dB

Assessment based on results of measurements in the laboratory obtained using a technical method.

$C_{tr,50-3150} = -4$ dB; $C_{tr,50-5000} = -4$ dB; $C_{tr,100-5000} = -3$ dB

Laboratory Manager Mr Antonio Scofano